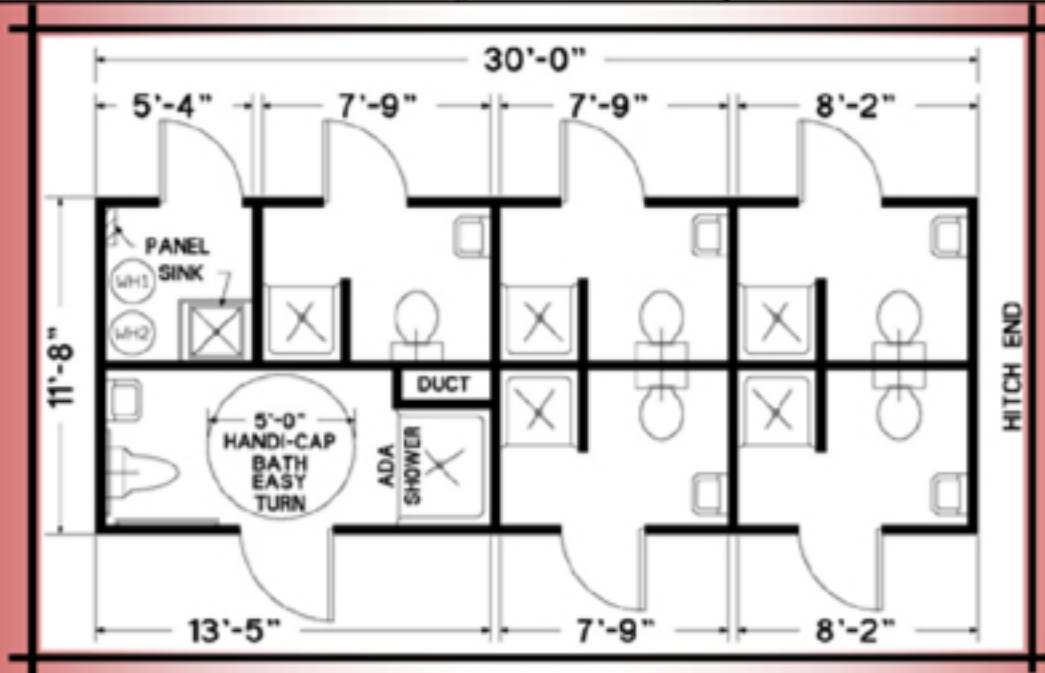




New for 2009 LiL' Lodges Bath House

Guaranteed to EXCEED any other manufacturer's construction



FLOOR SYSTEM

3/4" OSB SUBFLOORING (T&G)
15# FELT PAPER
15 MIL. COMMERCIAL VINYL
2X6 FLOOR JOIST
R-19 INSULATION

ROOF SYSTEM

7/16" LP TECHSHIELD DECKING
2X6 RAFTERS 16" O.C.
29 GAUGE METAL ROOFING
R-19 INSULATION
15# FELT PAPER

INTERIOR WALLS

2X4 WALL STUDS
4X8X1/2" OSB
4X8 FRP BOARD
COVE MOLDING

ALSO INCLUDED WITH THIS SPECIAL

2-TON HEAT PUMP
2-50 GALLON ELECTRIC WATERHEATERS

EXTERIOR WALLS

R-13 KRAFT BACK INSULATION IN ALL EXTERIOR WALLS
BUILDERS WRAP (EXTERIOR ONLY)
DOUBLE STUDS EVERY 4'-0" ON EXTERIOR WALLS
FOAMSEAL ALL STUDS AND ELECTRICAL BOXES
SMARTSIDE or CYPRESS LAP SIDING



**Call TOLL FREE at (877) 677-6977 or
Visit www.lillodges.com for more information**